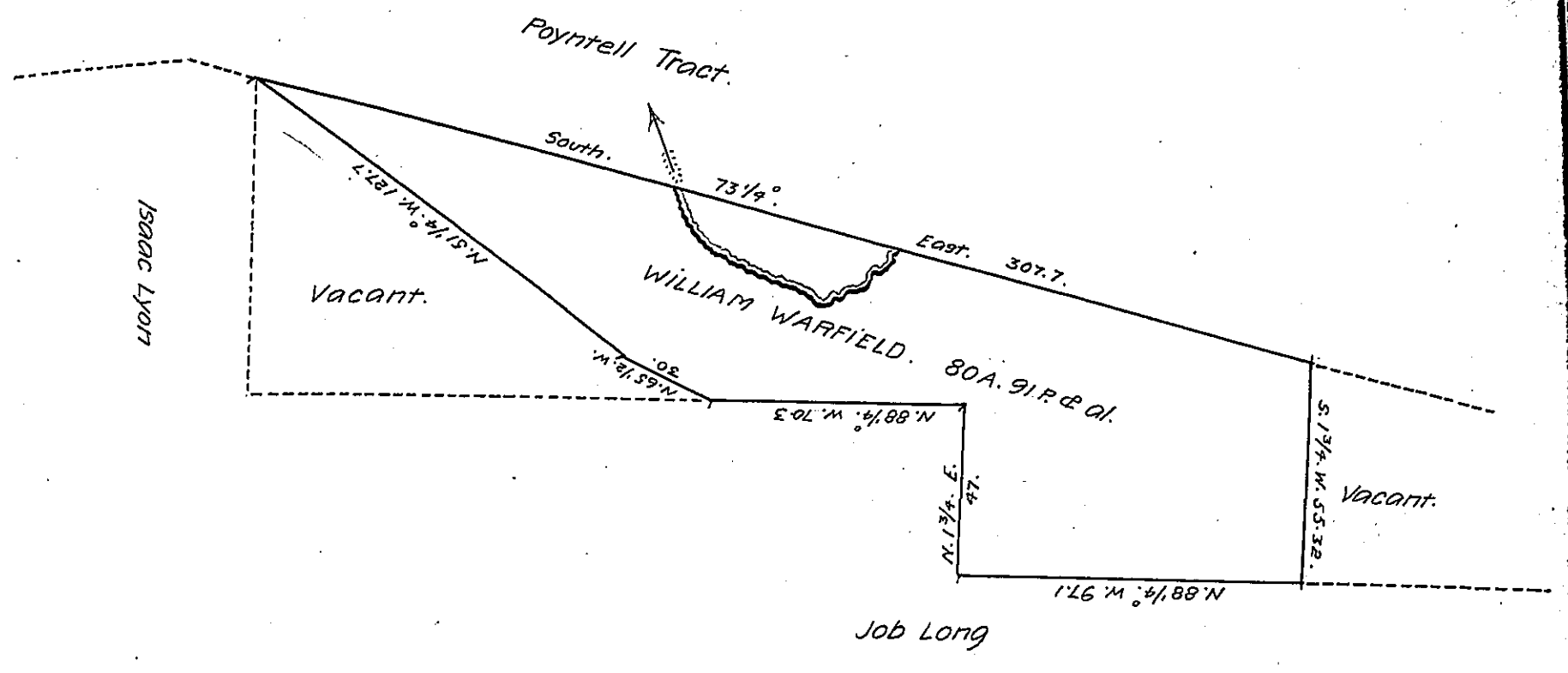


FORM NO 1.



*Draught of a tract of Land situate in Ornell tp. Bradford Co. Containing  
 80 Acres and 91 perches and allowance of 6 pr. ct. Surveyed Mar. 15th. 1852  
 to W<sup>m</sup> Warfield in pursuance of a Warrant dated Feb. 2. 1852.*

*E. G. Nichols. C. Surv.*

*To J. Porter Brawley. S.G.*

*IN TESTIMONY that the above is a copy of the original remaining on file in  
 the Department of Internal Affairs of Pennsylvania, made  
 conformably to an Act of Assembly approved the 16th day of  
 February, 1833, I have hereunto set my Hand and caused  
 the Seal of said Department to be affixed at Harrisburg,  
 this twelfth day of July 1907.*

*Henry Horne*  
 Secretary of Internal Affairs.